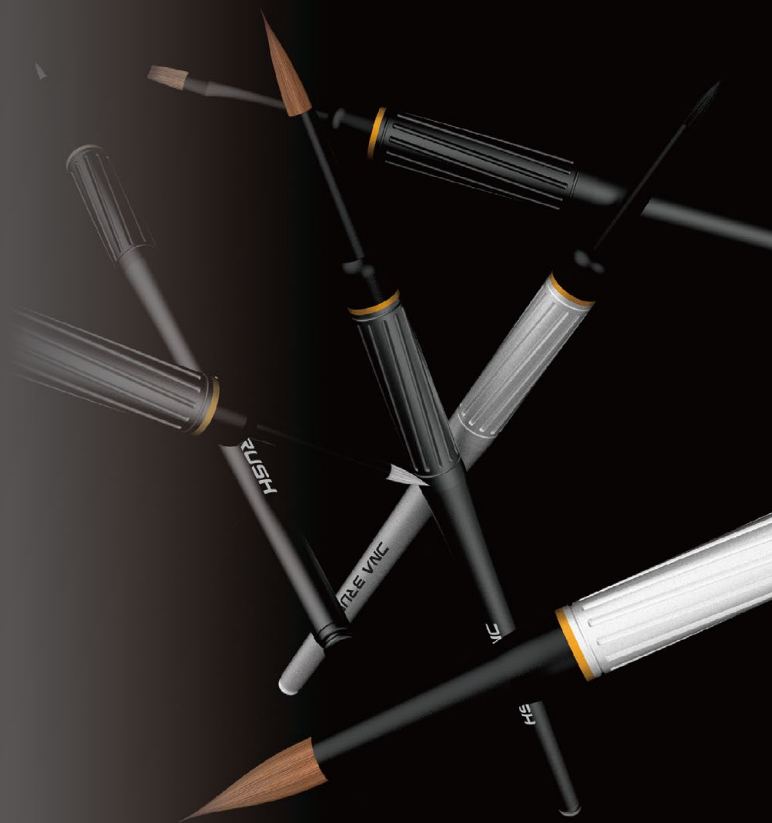


DXC
DNA BRUSH®



 Italian Taste



Crafted For Precision, Tested For Perfection





About Us

DNA BRUSH is a professional dental porcelain brush company committed to providing premium quality handmade instruments and offering optimal support for technicians and laboratories worldwide.

We are a team of passionate craftsmen in high quality dental technician instruments production, supported by the top Italian labs. DNA BRUSH is born through communication with industry-leading technicians and careful listening to their needs, allowing us to create innovative and high-quality designs.

The bristle of the brush is the key to achieving perfect results. From selecting, screening, and blending bristle materials to forming the brush shapes, we repeatedly test our products to meet the requirements and improve efficiency in dental laboratories workflows.

*"We take pride in our work,
as you do with your creations."*

DNA Fusion

Born to be loved by the best technicians.

With its distinctive advantage of natural Kolinsky hair tips and liquid-absorbent bristles, DNA Fusion offers both sharp precision and resilience.

Choose from three types of tips: Regular, Long Tip, and Smooth, to meet individual working needs. Replacement of brush tips is available and comes in a 2-piece refill pack, making it an eco-friendly and cost-effective choice.



Fusion



Tips/2pcs



#Brushes can be purchased individually or as separate brush tips.



Set



FL Set

Size 8 (Smooth) with handle, single tip #4 and #1



FL Set2

Size 6 (Regular) with handle, single tip #2 and #0



Tips

There are three shapes of tips for size 8 and 6 to meet your working needs.

- **Regular Tip**
Perfect for quickly layering porcelain over foundational surfaces, achieving consistent thickness and optimal control.
- **Smooth Tip**
Allows for distribution of porcelain powder, ensuring uniformity and stability across the restoration area.
- **Long Tip**
Designed for intricate detailing and precise control. Its long tip is ideal for detailed work and provide excellent flexibility and precision.



Regular
F06RT



Smooth
F06ST



Long Tip
F06LT



Regular
F08RT



Smooth
F08ST



Long Tip
F08LT

DNA Structure

Developed in collaboration with leading industry experts, the structure brushes are engineered to excel in micro-layering techniques. Whether you're working with high-viscosity materials or intricate details, these brushes provide the perfect balance of resilience and finesse, enable precise placement of materials and allowing for seamless blending and smooth transitions between layers.



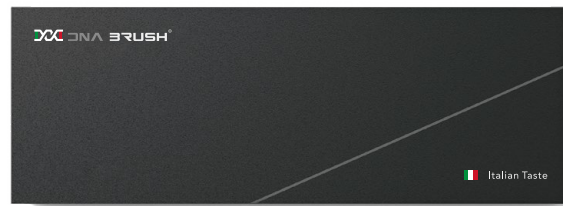
Structure



Tips/2pcs



Set



S Set
Size 4 with handle, single tip #2 and #1

Structure Tip Expansion

Expanded Tip Lineup for Full Control and Precision Oval sharp, flat, round, and fan tips — all in. With the new S Set 2, you're ready for sculpting, layering, and every detail in between.



Structure Tip Expansion

This new series introduces 6 distinct tip types, designed to handle everything from contour shading to layered texturing:



1

2

3

4

5

6

#4 V-Shape

#2 V-Shape

#4 Flat

#2 Flat

#0 Round

#1 Fan



Tips/2pcs



S0T



SV02T



SV04T



SA01T

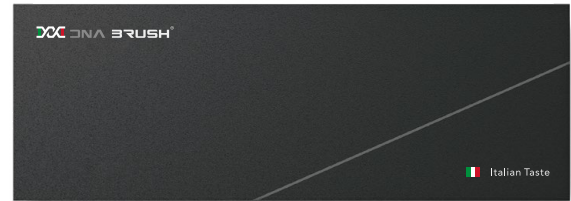


SF02T



SF04T

Set



S Set 2

Size SA01 with handle, single tip #S0 #SF04 and #SV04

DNA Zshade

Metal-free ferrules, made to meet the unique requirements of dental technicians working with zirconia and water-based liquids. The slightly softer bristles are also suitable for micro-layering application if desired.

DNA Zshade offer exceptional control and accuracy in achieving desired shades and translucencies, ensuring optimal aesthetics and functionality in your dental restorations.



Zshade



Z01



Z02



Z04



Tips/2pcs



Z01T



Z02T



Z04T

Set



Z Set

Size 4 with handle, single tip #2 and #1

Developed with Master Technician Kang Chien Ming, made with natural Kolinsky hair, and designed according to Kang's specific preferences and techniques in dental aesthetics.

This set features a unique handle with a spoon-shaped tail for picking up ceramic powder and a slightly increased weight (12g) to provide a balanced and steady feel during work.



Designed with a spoon-shaped tail, it is ideal for picking up ceramic powder and surface texturing or shaping.

Easy die segment release.

The precisely designed dehydration ring around the handle enhances porcelain compaction.

-Laser Engraved Handle-



- Laser Engraved Signature-



Kang



KA06R

KA08R

Tips/2pcs

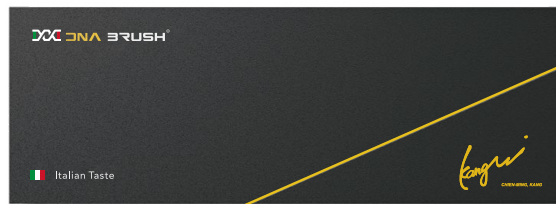


Ultra
Fine

KA0T

KA02T

Set



KA Set

Size K06R (Regular) and K02 with handle, single tip #K0 and Ultra Fine

Ultra Fine

Made with a unique material, unlike any on the market.

Featuring a super fine and durable tip, specifically designed for staining & glazing—a must-try.



Spatula



Stronger, lighter, and safer than zirconia.



Spatula

Carbon / Glass Fiber Spatula — Lightweight. Durable. Innovative.

Industry-first carbon / glass fiber — ultra-tough and shatter-resistant.



CB01T
-
Sculpt Blade
carbon fiber 0.6mm



CB02T
-
Angled Blade
carbon fiber 0.6mm



GB01T
-
Curve Blade
glass fiber 0.5mm

- Heat-stable and warp-proof for long-term durability
- Carbon fiber + aluminum handle — balanced feel with premium aesthetics
- Available in Sculpt Blade / Angled Blade designs
- Perfect for mixing ceramic powder and liquid ceramic
- Carbon fiber is not recommended for use on aluminum oxide or other hard surfaces, as scratches may occur



Handle

Three handle colors to choose from:

Trendy Black, Classic White, and Sleek Gray.

Each handle is lightweight and ergonomically designed to ease the burden on your hand while providing a sophisticated look.



HDG
11.5gr - Grey



HDB
11.5gr - Black

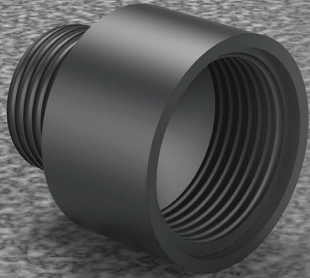


HDW
8.5gr - White



HDC
11gr - Carbon Fiber

Handle connector



black anodized aluminum
Details

Unique spiral design securely connects the handle and tip.



Handle Connector

Brush Care



Keep your brushes in their best condition at all times.



BRUSH CARE

Designed to maintain the optimal shape of brush tips.
Prevents bristles from spreading and keeping the brush
ready for next use.
Suitable for long-term storage and daily maintenance.



DNABHC

Capacity 30 ml

Ingredients Purified Water, Glycerin, Alcohol, PEG200, Triethanolamine,
Methyl Hydroxyethyl Cellulose, Smoothing Agent,
Preservative, Fragrance

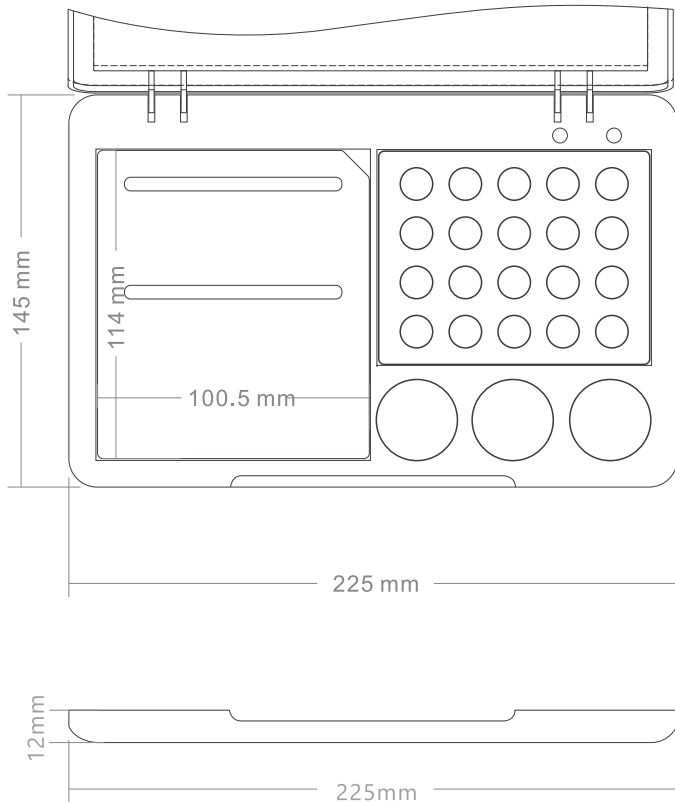
Stain Artist Palette



Smart and safe storage for ceramic stains.

Stain Artist Palette Size

(Picture Size 1:2)

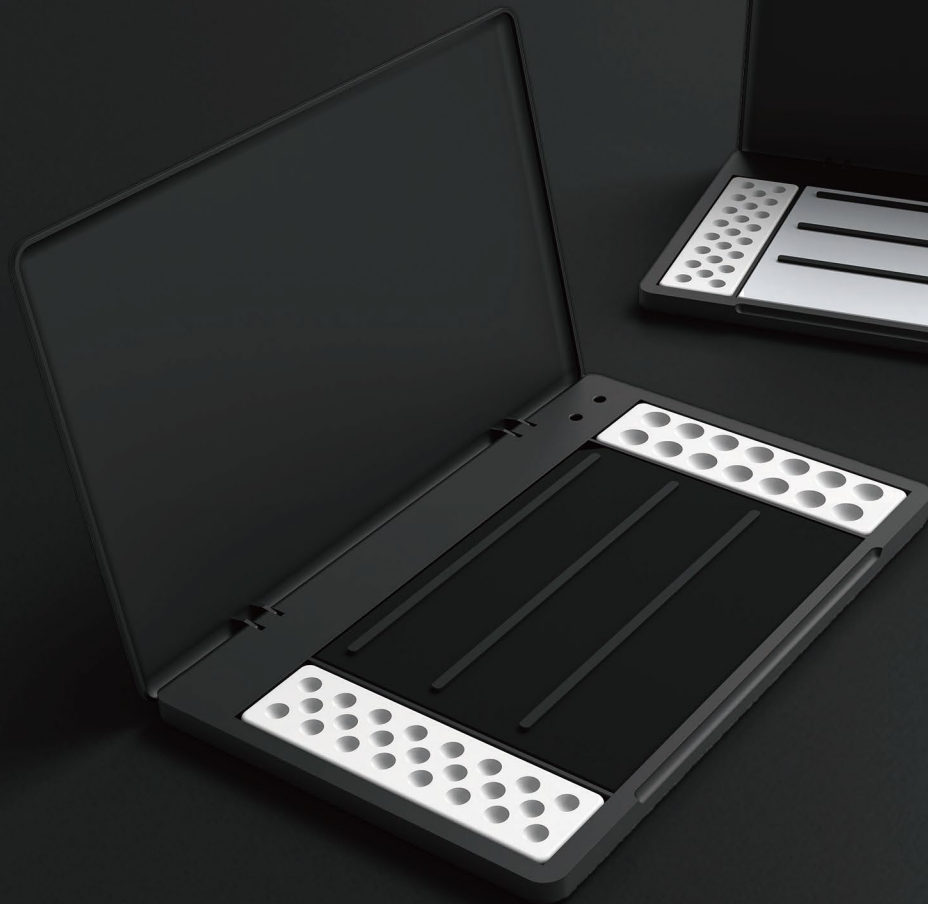


This compact and perfectly sized palette is ideal for your stain work. It includes a white tempered glass surface that is smooth to the touch, combined with black PVA filter strips to maintain porcelain moisture during use.

The right side of the palette features a mixing panel that equipped with 20 wells. Additionally, it has two larger mixing areas for liquids and a sponge is for cleaning brushes.

Item No	Description
SAW	Stain Artist Palette Complete Set: Case-lid, white glass panel, Stain palette , black PVA strips 10pcs, Sponge, 2pcs
SAGW	White glass panel, size:114 x 100.5 x 5mm, and 10 black PVA strips
SAC	Stain palette, size: 100.5 x 79 x 10mm
SAS	Sponge, 5pcs
SAP	Black PVA strips, 10 pcs

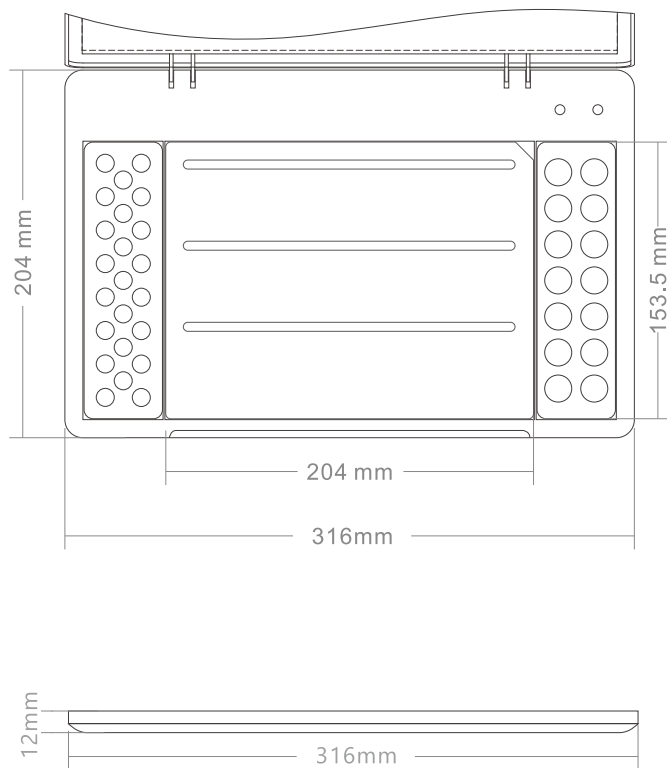
MC Senior Palette



All-in-one ceramic palette

MC Senior Palette Size

(Picture Size 1:3)



The refined design of our all-in-one ceramic palette features optimized working areas for both paste opaque and stains that made in aluminum oxide, as well as 2 brush holder placements.

The main working area boasts a smooth surface anti-reflective glass available in two colors, classic black and elegant white. Black PVA filter strips inserted in the glass maintain moisture, drawing from the reservoir underneath the glass panel.

Item No	Description
MCW	MC Senior Palette Complete Set: Case-lid, white glass panel with slots, glazed opaque, stains palettes and black PVA strips 10pcs
MCB	MC Senior Palette Complete Set: Case-lid, black glass panel with slots, glazed opaque, stains palettes and black PVA strips 10pcs
MCGW	White glass panel with slots, size: 204 x 153.5 x 5mm, and 10 black PVA strips
MCGB	Black glass panel with slots, size: 204 x 153.5 x 5mm, and 10 black PVA strips
MCST	Stain palette in glazed ceramic, size: 153.5 x 43.5 x 10mm
MCOP	Opaque palette in glazed ceramic, size: 153.5mm x 43.5mm x 10mm
MCS	Black PVA strips, 10pcs

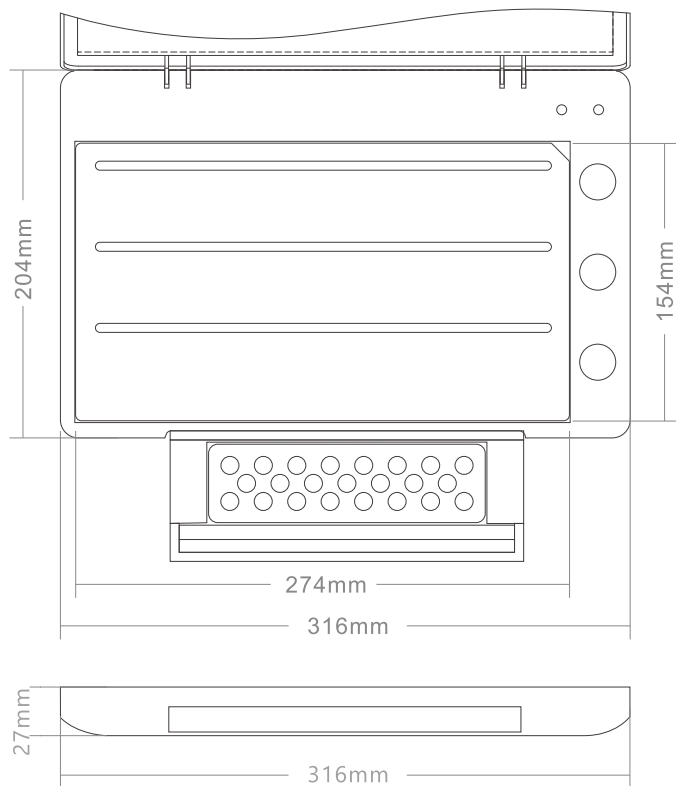
ZR Layering Palette



Designed for precise dental material layering.

ZR Layering Palette Size

(Picture Size1:3)



Designed for precise dental material layering. With a spacious 274 x 154mm workspace and classic black or elegant white anti-reflective glass options, it offers both versatility and style.

Features include three mixing wells, 2 brush holder placements, and a separate drawer houses an aluminum oxide palette for stains.

Item No	Description
ZRW	ZR Layering Palette Complete Set: Case-lid, white glass panel with slots, glazed stain palette and black PVA strips 10pcs
ZRB	ZR Layering Palette Complete Set: Case-lid, black glass panel with slots, glazed stain palette and black PVA strips 10pcs
ZRGW	White glass panel with slots, size: 274 x 154 x 5mm, and 10 black PVA strips
ZRGB	Black glass panel with slots, size: 274 x 154 x 5mm, and 10 black PVA strips
MCST	Stain palette in glazed ceramic, size: 153.5 x 43.5 x 10mm
ZRS	Black PVA strips, 10pcs

Crafted to Perfection



DNA BRUSH®

www.dnabrush.net



info@dnabrush.net

DNA

